

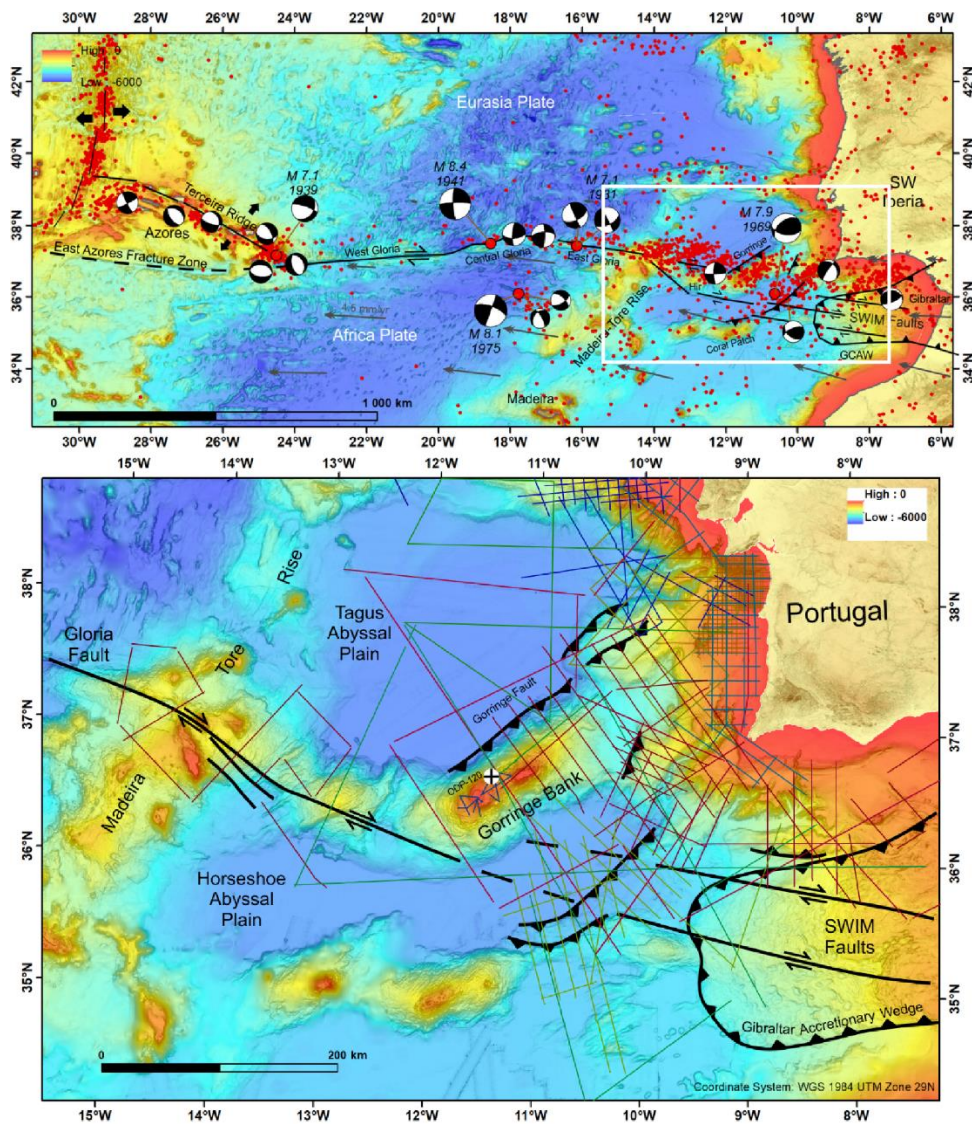
# MAGELLAN PLUS WORKSHOP

12-13 September 2019

Lisbon, Portugal

## RELICT

### THE ROLE OF LITHOSPHERIC INHERITANCE ON SUBDUCTION INITIATION



We are pleased to announce and call for the participation of the scientific community at the **RELICT Magellan Plus workshop**, at 12-13 September 2019, hosted by IPMA, the Portuguese Institute for the Sea and Atmosphere ( [www.ipma.pt](http://www.ipma.pt) ; Lat. 38.775976; Long. -9.125747).

RELICT has the aim to discuss the rationale to submit an IODP multiple drill proposal to retrieve cores across the continental Moho in the SW Iberia rifted Margin, the Ocean-Continent Transition (OCT) and the Africa-Eurasia transform-subduction plate boundary in the Atlantic.

The workshop is a timely fit with the JOIDES RESOLUTION's timeline (drilling in 2023-2024 in the North Atlantic), and offers the possibility to tackle fundamental questions such as the nature of the lithospheric mantle in hyper-extended continental margins and OCT, and subduction initiation at transform faults.

IPMA is located at 10 min walk from the Lisbon International Airport and 20 minutes subway from the Lisbon city center.

Registration is free but mandatory for organization purposes. Poster presentations are welcome.

<http://relict-magellanplus.ipma.pt>

Contacts:

[Pedro.terrinha@ipma.pt](mailto:Pedro.terrinha@ipma.pt)

[marta.neres@ipma.pt](mailto:marta.neres@ipma.pt)

[vitor.magalhaes@ipma.pt](mailto:vitor.magalhaes@ipma.pt)

DAY 1 12 September 2019			
9:00-9:30	Administrative	Registration	
9:30-9:40	Administrative	Welcome and introduction	
TIME	SESSION TYPE	TITLE / AUTHOR	CHAIRMAN
9:30-09:45	Oral presentation	<b><i>Towards a RELICT Pre-IODP proposal</i></b> Pedro Terrinha (IPMA, Portugal)	César Ranero
9:45-10:00	Oral presentation	<b><i>Overview of IODP and Technology of the JOIDES Resolution</i></b> Leah Levay (IODP, USA)	
10:00-10:15	Oral presentation	<b><i>Geological setting of SW Iberia – an overview from rifting-drifting through Alpine orogeny to Present Margin reactivation</i></b> Marc-André Gutscher (UBO, France), Nevio Zitellini (ISMAR, Italy)	
10:15-10:30	Oral presentation	<b><i>Crustal and upper lithospheric mantle nature in SW Iberia</i></b> Sara Martínez (ICM, Spain)	
10:30-11:00	Keynote Speaker	<b><i>Exhumation of partially serpentized mantle by detachment faults at mid-ocean ridges and continent-ocean transitions</i></b> Mathilde Cannat (IPGP, France)	
11:00-11:20	Discussion 1	<ul style="list-style-type: none"> <li>• Goringe Bank drilling across the Moho and OCT. How does it improve our understanding on serpentized mantle and OCT rheology ?</li> </ul>	
11:20-11:50	Coffee break / Posters		
11:50-12:20	Keynote Speaker	<b><i>Various modes of subduction initiation with special emphasis on the SW Iberia margin case</i></b> Serge Lallemand (Univ. Montpellier, France)	
12:30-13:00	Keynote Speaker	<b><i>Subduction dynamics and overriding plate deformation</i></b> Wouter Schellart	
13:10-14:10	Lunch break		
14:10-14:30	Oral presentation	<b><i>Fluid flow in transform faults</i></b> Paola Vannucchi (RHUL, UK)	Marc-André Gutscher
14:40-15:10	Keynote Speaker	<b><i>Delamination of oceanic lithosphere: a key for subduction initiation?</i></b> João Duarte (Univ. Lisbon, Portugal)	
15:20-15:50	Keynote Speaker	<b><i>Porous fluid flow controls subduction initiation and seismicity</i></b> Taras Gerya (ETH, Switzerland)	
16:00-16:30	Coffee break / Posters		
16:30-16:50	Keynote Speaker	<b><i>Subduction initiation in SE China: perspectives for projects</i></b> Chun-Feng Li (Zhejiang Univ., China)	
17:00-17:20	Oral presentation	<b><i>Seismicity and seafloor deformation along a strike-slip Africa-Eurasia plate boundary segment</i></b> Eulàlia Gràcia (ICM, Spain)	
17:20-18:00	Discussion 2	<ul style="list-style-type: none"> <li>• Goringe Bank drilling across serpentized mantle. How does it help understanding subduction initiation?</li> </ul>	
19:00	Dinner downtown		

DAY 2			
13 September 2019			
TIME	SESSION TYPE	TITLE / AUTHOR	CHAIRMAN
9:00-9:20	Oral presentation	<b><i>Tsunami hazard in Southwest Iberia</i></b> Rachid Omira (Univ. Lisbon, Portugal)	Paola Vannucchi
9:30-9:50	Oral Presentation	<b><i>Potential hotspots of life in marine fracture zones with active fluid seepage from the lithosphere</i></b> Clemens Glombitza (ETH, Switzerland)	
10:00-10:30	Keynote Speaker	<b><i>Drilling the ocean basement: what can and cannot realistically be achieved</i></b> Christopher MacLeod (Univ. Cardiff, UK)	
10:40-11:10	Coffee break		
11:10-12:10	Discussion 3	<b>Monitoring the SWIM Faults: improving knowledge &amp; mitigation of Transform Plate Boundary Hazards?</b> Introduction by Achim Kopf (MARUM, Bremen University) (via Skype)	
12:10-13:30	Lunch break		
13:30-15:30	Discussion 4	• <b>Split up sessions</b>	Nevio Zitellini
15:30-16:00	Coffee break		
16:00-17:00	Discussion 5	• <b>Wrap up/conclusions from split up sessions</b>	Pedro Terrinha
17:00	Closure		